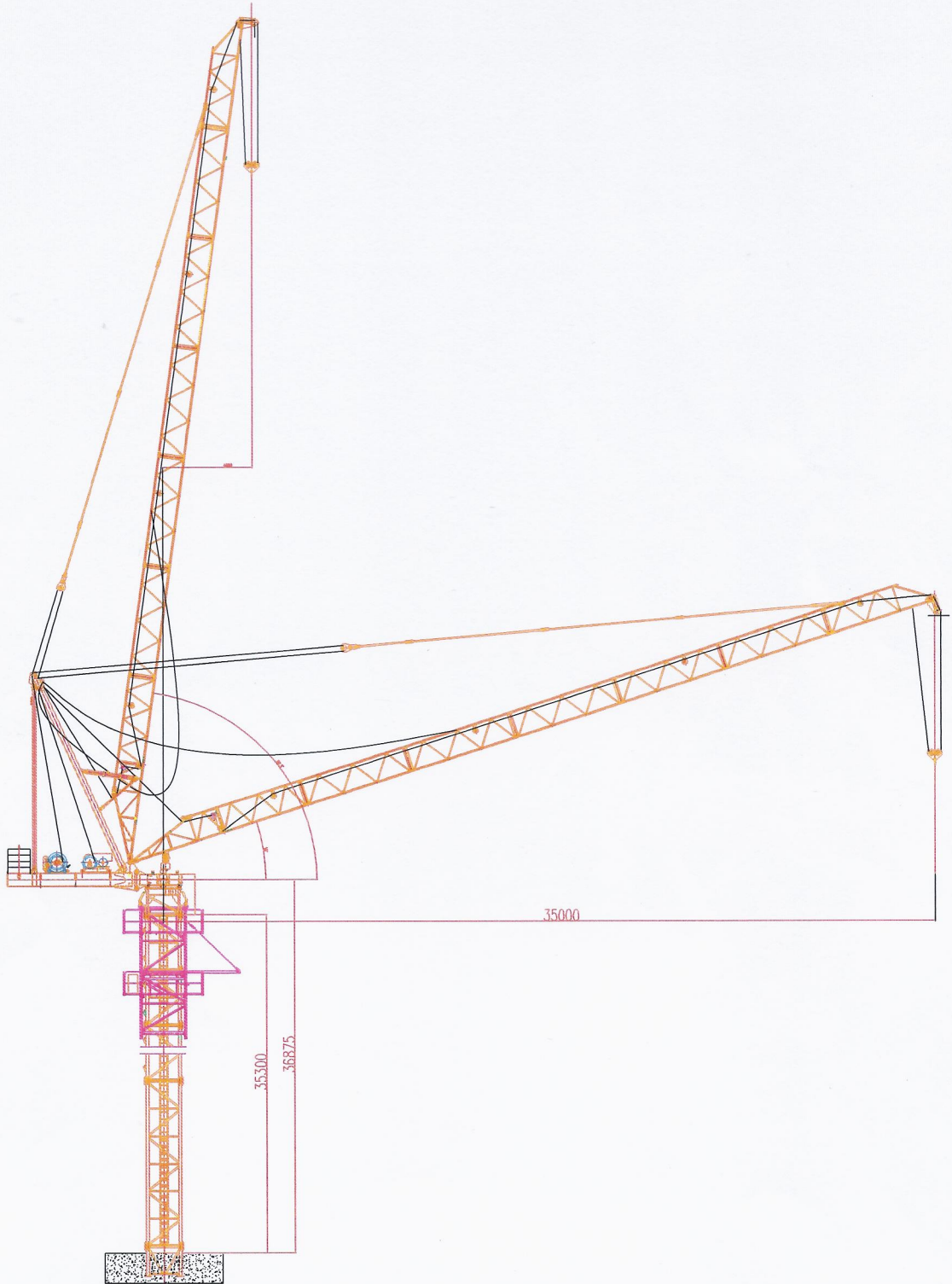


WTL 3035-2.8 사양서



2.1 WTL3035 luffing jib tower crane technical performance

2.2 Load characteristic table

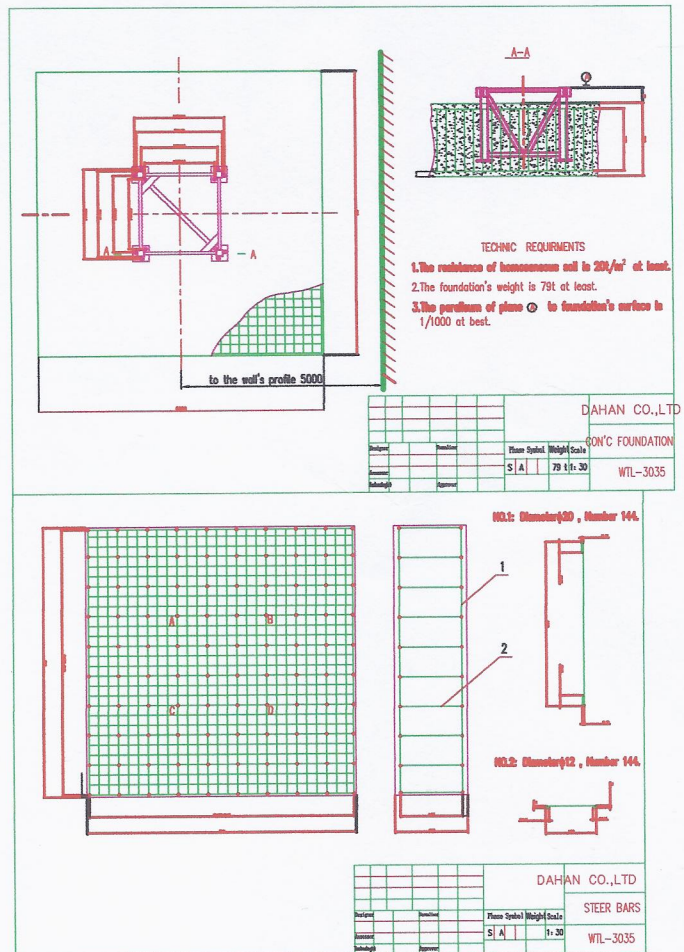
Working radius R(m)	4-25	30	35
Load capacity t (2 fail)	2.8	2.43	2.00

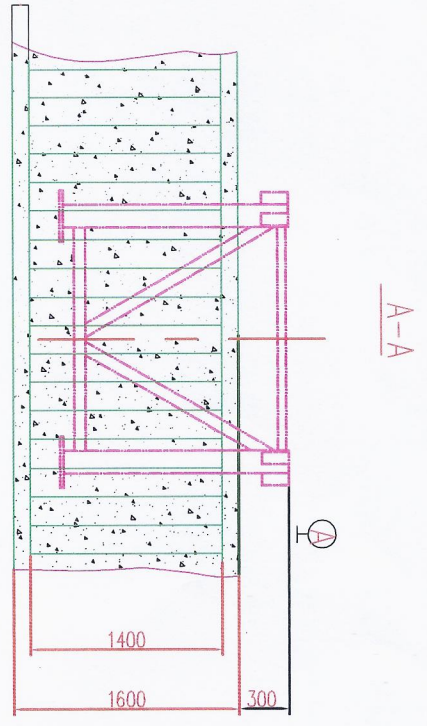
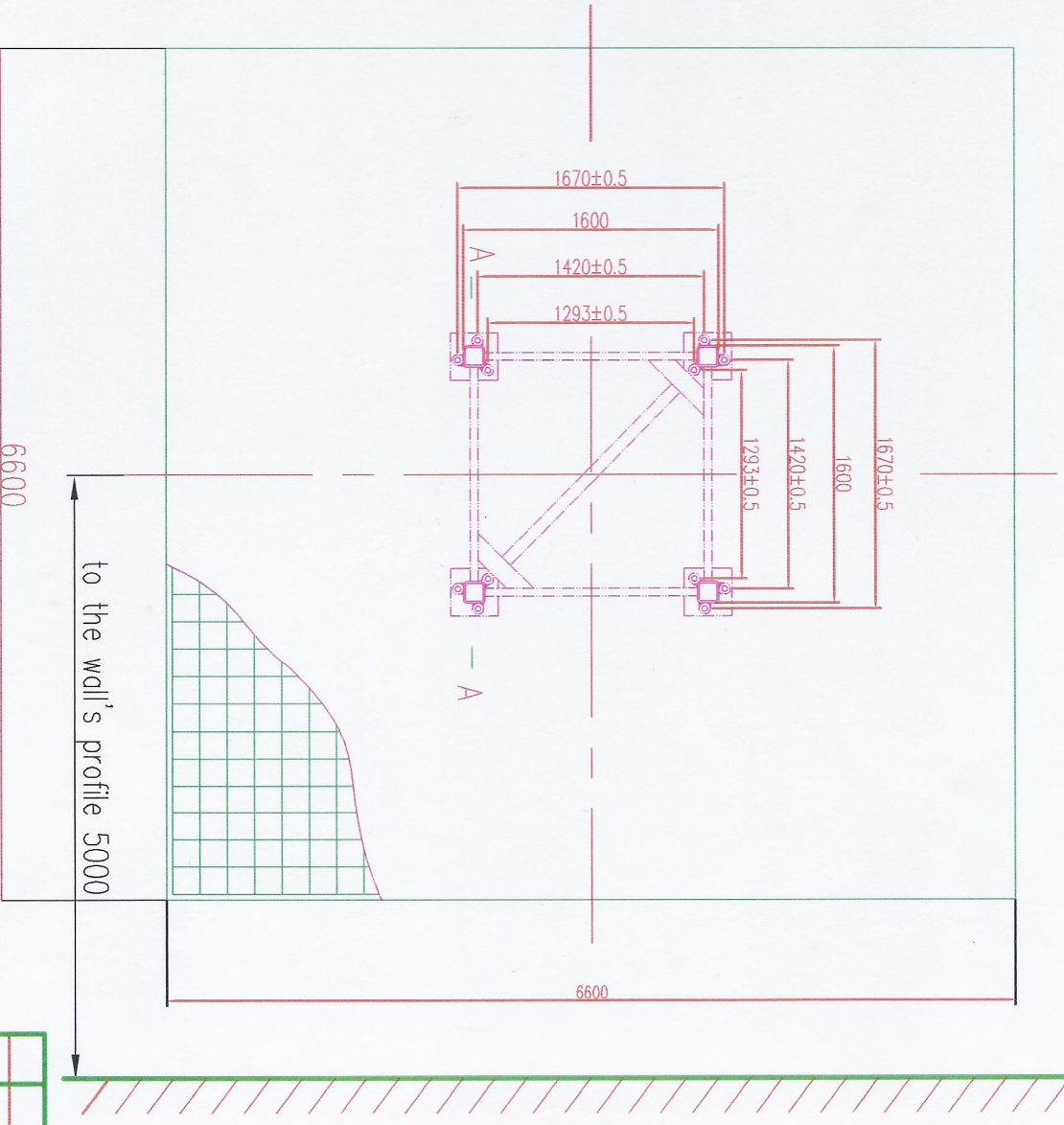
2.2 Attaching



TECHNICAL SPECIFICATION				
tower height (m)	rate	free height		attaching height
	$\alpha=2$	35.3		102.8
working elevation	Maximum : 82.3' ~ Minimum : 18'			
max weight (t)	2.8TON			
hoisting	LOAD	2.8	2.8	1.4
	velocity(m/min)	8.5	40	80
	power (kw)	4	15	24
slewing	velocity(m/min)		0.60	
	power (kw)		4	
Luffing	velocity(m/min)		0.37	
	power (kw)		18.5	
climbing	velocity(m/min)		0.55	
	pressure (MPa)		25	
	power (kw)		7.5	
counter weight	3.72 ton			
electricity	54kw AC380V 60HZ / DC 48V			
control type	wire remote control			
colour	orange			

대인차단기 : 125A

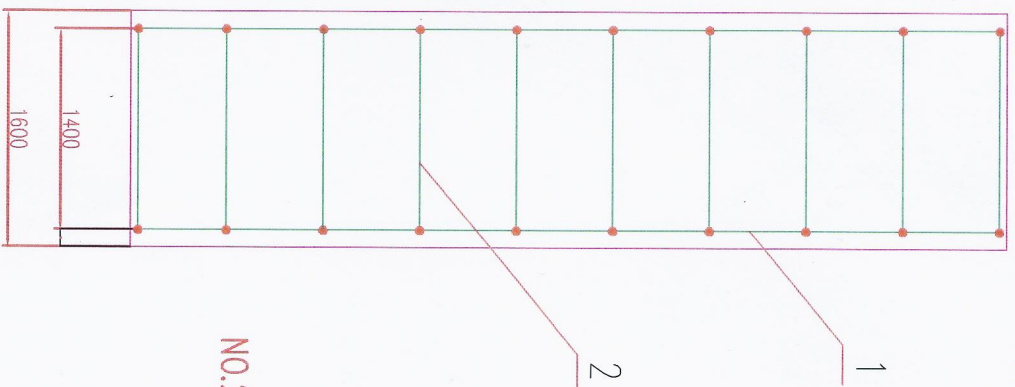
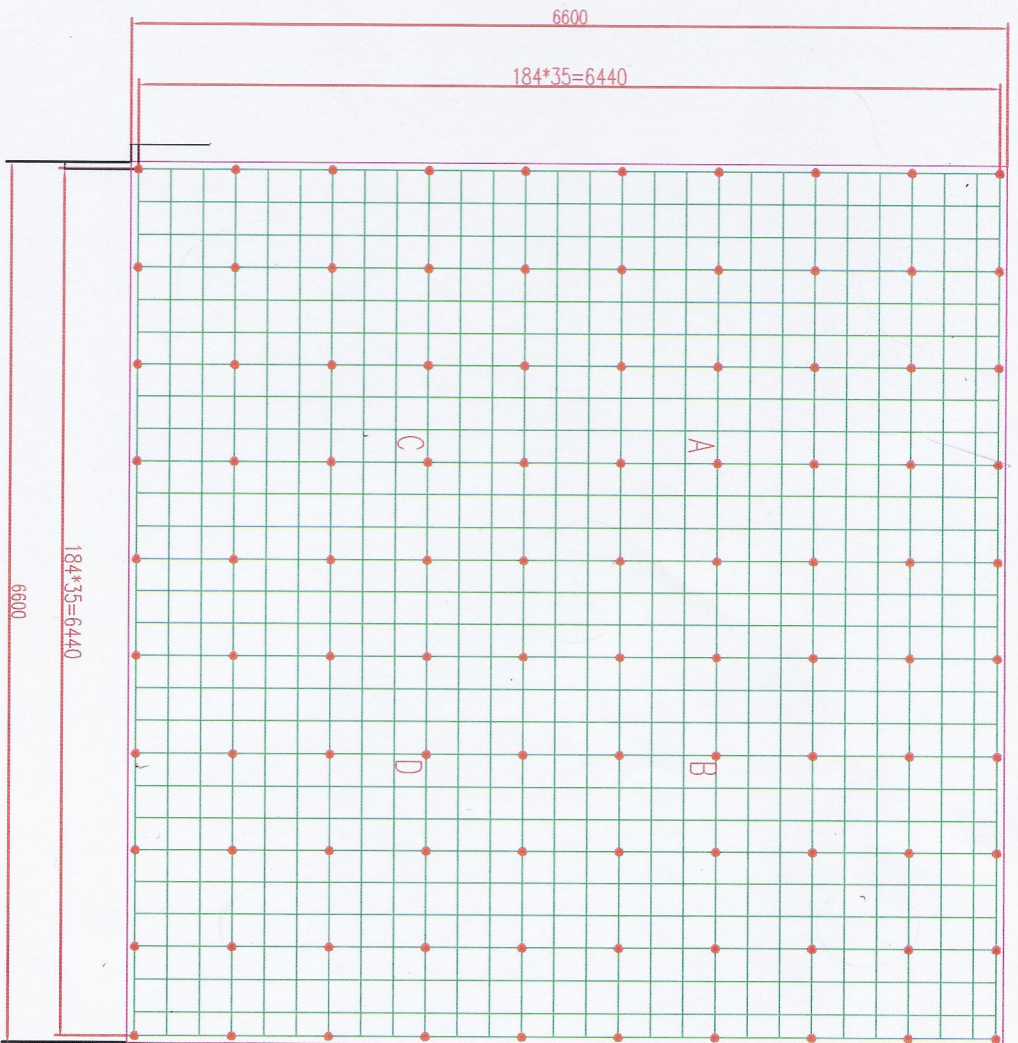




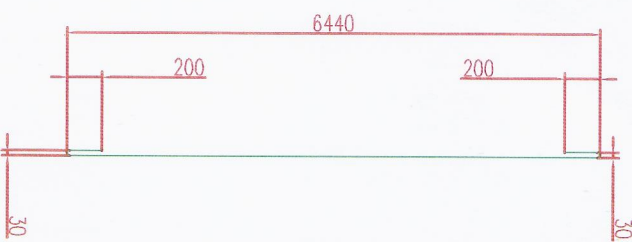
TECHNIC REQUIREMENTS

1. The resistance of homogeneous soil is $20t/m^2$ at least.
2. The foundation's weight is 79t at least.
3. The paraisum of plane $\text{A} \text{---} \text{A}$ to foundation's surface is $1/1000$ at best.

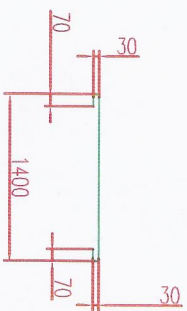
Designer		Normalizer		Phase Symbol	S A	Weight Scale	79 t 1 : 30	DAHAN CO.,LT CON'C FOUNDATION WTL-3035
Assessor		Approver						
Technologist								



NO.1: Diameter $\phi 20$, Number 144.



NO.2: Diameter $\phi 12$, Number 144.



Designer	Normalizer	Phase Symbol		DAHAN CO.,LTD	STEER BARS
Assessor	Approver	S	A		
Technologist				1: 30	WTL-3035